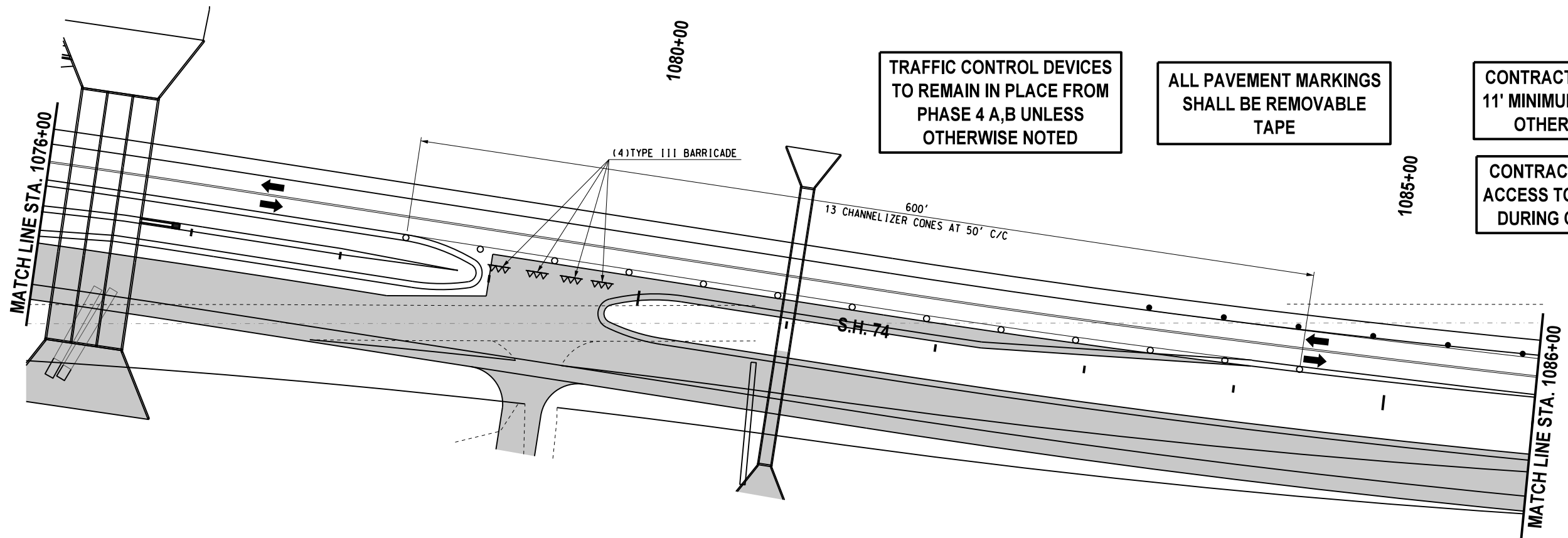
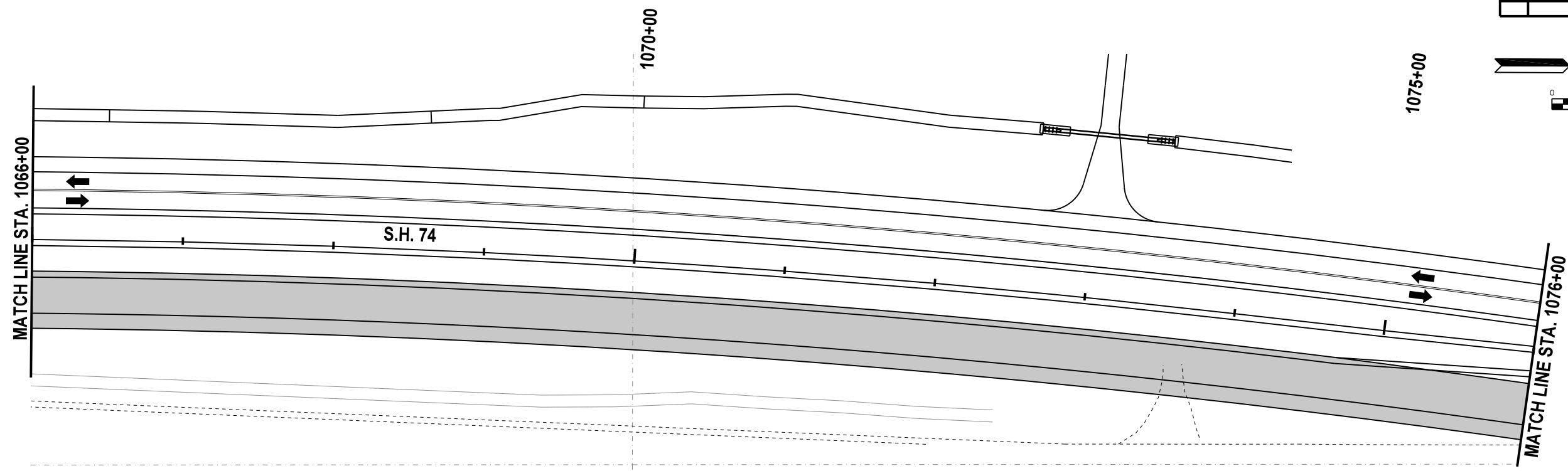
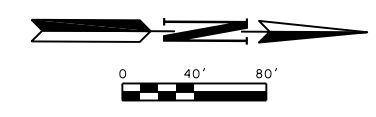


| REVISIONS | | |
|-----------|-------------|------|
| NO. | DESCRIPTION | DATE |
| | | |



TRAFFIC CONTROL DEVICES
TO REMAIN IN PLACE FROM
PHASE 4 A,B UNLESS
OTHERWISE NOTED

ALL PAVEMENT MARKINGS
SHALL BE REMOVABLE
TAPE

CONTRACTOR SHALL KEEP
11' MINIMUM LANES UNLESS
OTHERWISE NOTED.

CONTRACTOR TO PROVIDE
ACCESS TO ALL DRIVEWAYS
DURING CONSTRUCTION.

| LEGEND | |
|--------|--|
| △△ | - TYPE III BARRICADE W/ TWO TYPE "A" LIGHTS |
| ● | - DRUM |
| ○ | - CHANNELIZER CONE |
| ▬ | - PORTABLE CONC. BARRIER WALL |
| ▬ | - CONSTRUCTION ZONE IMPACT ATTENUATOR |
| ■ | - WORK AREA |

| | | |
|--------|-----|----------|
| Design | RWR | 08/10/17 |
| Drawn | GDB | 08/10/17 |



**TRAFFIC CONTROL
PHASES 4F & G (SHEET 2 OF 3)
S.H. 74 (STA. 1066+00 TO 1086+00)**
State Job No. 14964(08) Sheet No. T102

08/10/17 G:\Projects\T-1662B SH 74 @ NW 178th, NW 192nd & NW 206th\CAD\TC PHASE 4FC.2 SH 74.dgn